



3. nadzemní podlaží

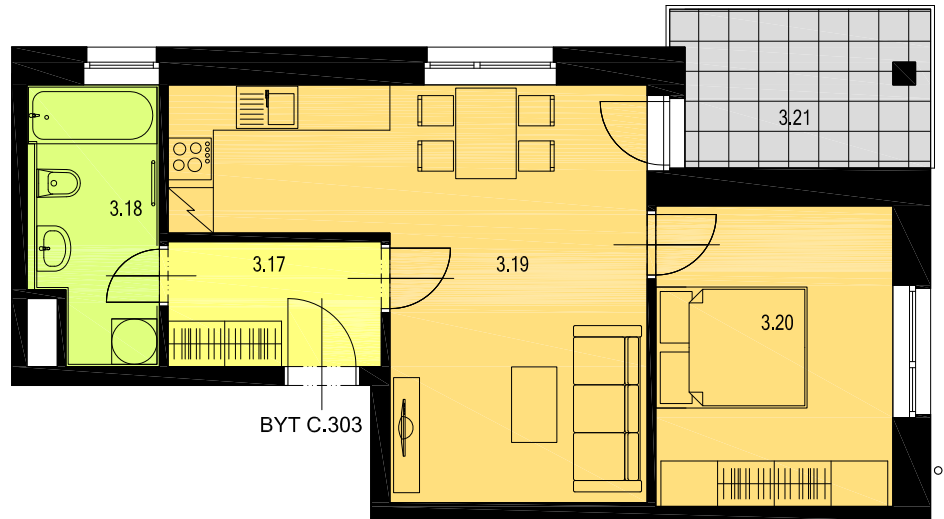
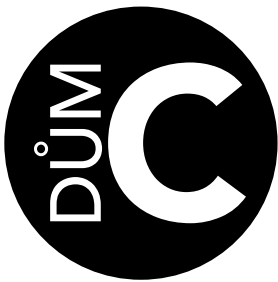
# REZIDENCE U PARKU

PROSTĚJOV

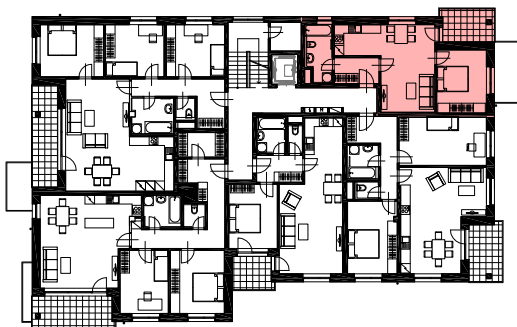
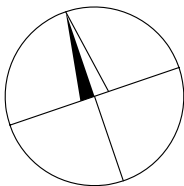


## BYTOVÁ JEDNOTKA C.303

|                  |                      |
|------------------|----------------------|
| PODLAHOVÁ PLOCHA | 47,92 m <sup>2</sup> |
| PLOCHA LODŽIE    | 6,93 m <sup>2</sup>  |
| PLOCHA SKLEPA    | 3,40 m <sup>2</sup>  |
| PLOCHA CELKEM    | 58,25 m <sup>2</sup> |



BYT C.303



# 2+KK



|                  |      |                    |              |       |                    |
|------------------|------|--------------------|--------------|-------|--------------------|
| BYT C.303 - 2+KK | 3.17 | CHODBA             | 4,83         | 2 630 | LAMINÁTOVÁ PODLAHA |
|                  | 3.18 | KOUPELNA + WC      | 6,00         | 2 400 | KERAMICKÁ DLAŽBA   |
|                  | 3.19 | OBÝVACÍ POKOJ + KK | 24,63        | 2 630 | LAMINÁTOVÁ PODLAHA |
|                  | 3.20 | LOŽNICE            | 12,46        | 2 630 | LAMINÁTOVÁ PODLAHA |
|                  | 3.21 | LODŽIE             | 6,93         | 2 630 | BETONOVÁ DLAŽBA    |
|                  |      | PODLAHOVÁ PLOCHA   | 47,92 + 6,93 |       |                    |